

### PD Flowmeters

PD Flowmeter PDM400 and PDM600

## Positive Displacement Flow meters 4" or 6" Flow Rate up to 4,000 l/min. Accuracy $\pm 0,1\%$



### TURNKEY SOLUTIONS

There are many variables to take into account when fitting a blending system and our highly skilled engineers will adapt our system to fit your exact requirements.

### TECHNICAL SUPPORT

We are with you all the way. Before, during and after the implementation to secure a flawless integration and operation.

### ZERO DOWNTIME

As a central part of a bunker delivery system; mechanical stability, toughness and durability is an important aspect of the manufacturing and design philosophy.

For more information on these or other of our products or services please visit us on the Web at:

[www.cbi.dk](http://www.cbi.dk)

### USES

- Loading of tanks, tank wagons, and barges
- Transfer of petrochemical products in refineries, depots and pipelines
- Calibration of other meters and vessels (Master meters).

## High Volume Flow Meters

The PDM series PD Flow meters are positive displacement types that are available in 4" or 6" sizes.

The meters have proven their exceptional accuracy over a very wide range, and this accuracy is maintained over a long period of use.

The durability is obtained using a simple but ingenious design. The only moving parts are the rotor and rotor vanes which are constantly immersed in liquid.

The PDM flow meters are suitable for a wide range of pressures up to 1,050 KPa (25 bar) while maintaining a high measuring precision.

Moreover the design permits disassembly of the measuring chamber without removing the external case from the production line.

The vanes are driven by the internal surface of the body. The calibration mechanism

permits micro metric recording which makes calibration of the meter very easy.

The counter permits reading and setting of the parameters necessary to perform the following functions:-

- totalization
- presetting
- temperature compensation at 15°C
- linearization of the meter's error curve
- transmission of data
- 

The readings can be in m<sup>3</sup> or litres.

There are two models to choose from depending on the application; the PDM 400 and the PDM 600.

### PD Flowmeters

PD Flowmeter - PDM400 and PDM600

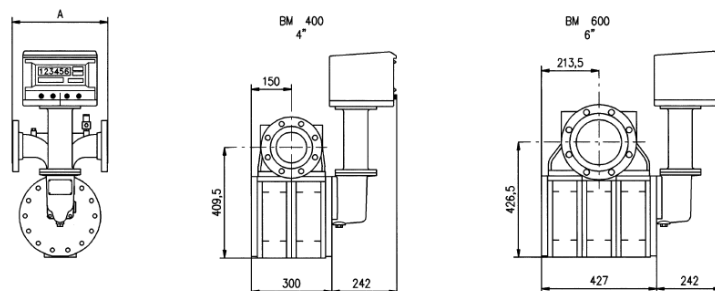
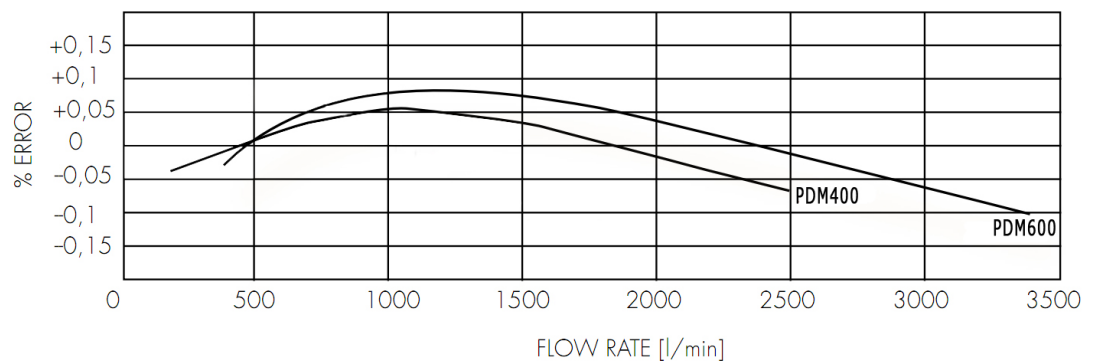
#### SERVICES AVAILABLE

Consulting Services  
Technical Support  
Installation and Setup  
Maintenance  
Warranty

## Technical Specifications PD Flowmeters - PDM 400 and 600

	Bunker Fuel 400 cSt - ACTUAL		Gasoil and cutter 10 cSt - ACTUAL	
	Max. Permanent flow rate	Max. Temporary flow rate	Max. Permanent flow rate	Max. Temporary flow rate
<b>PDM400 4"</b> (DN100 PN16)	1,200 l/min 72 m <sup>3</sup> /h	1,300 l/min 78 m <sup>3</sup> /h	2,400 l/min 144 m <sup>3</sup> /h	2,600 l/min 156 m <sup>3</sup> /h
<b>PDM600 6"</b> (DN150 PN16)	1,700 l/min 102 m <sup>3</sup> /h	2,000 l/min 120 m <sup>3</sup> /h	3,400 l/min 204 m <sup>3</sup> /h	4,000 l/min 240 m <sup>3</sup> /h
<b>Counter Reading</b>		Litres and M <sup>3</sup>		
<b>Max. Working Pressure</b>		ANSI 150 RF: 16 bar (1050 kPa) Test Pressure: 25 bar		
<b>Working Temperature</b>		Min. 263 K (-10°C) Max. 373 K (+100°C)		
<b>Coupling</b>		Magnetic Drive up to +100°C		
<b>Calibration Mechanism</b>		Included		
<b>Veder Root 7887 Totalizer Counter</b>		Included (5 Digit resetable, 8 digit non-resetable)		

#### Accuracy curves



#### Strainers and air separators

For accurate metering the liquid has to be correctly filtered and deaerated.  
Suggested filtration:

- 100 mesh for gasoline, kerosene and water
- 60 mesh for diesel oil
- 40 mesh for viscous products.

# Go4

INTELLIGENT BUNKERING SOLUTIONS

Go4 Bunker ApS

Lille Blodevej 3

DK-3600 Frederikssund

Denmark

+45 4731 3388

www.cbi.dk